

SCREW ON TYPE MILLING CUTTER EXTENSIONS



COVENTRY ENGINEERING GROUP

SCREW ON TYPE MILLING CUTTER EXTENSIONS

INDEX

PRODUCT	FORM	PAGE
MILLING CUTTER ARBOR		3
MILLING CUTTER ARBOR/EXTENSION		4
REDUCING MILLING CUTTER ARBORS		5
SAW BLADE HOLDERS		5



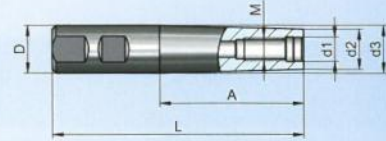
Fräsörne für Einschraubfräser Zylinderschäfte

Milling Cutter Arbors for Screw-on type Milling Cutters

Axes Coupeur Fraisage Pour Vis-Sur Type Coupeurs de Fraisage

Vidalı tip frezeler için Silindirik Şaftlı Takım Tutucular

Bestell-Nr. Order Nr. Référence Sipariş Nr.	D	M	d1	d2	d3	A	L	Euro
120.12.12.M05.020	12	M5	5,5	10	12	20	65	
120.12.20.M06.025	20	M6	6,5	10	18	25	75	
120.12.20.M06.050	20	M6	6,5	10	18	50	100	
120.12.20.M06.075	20	M6	6,5	10	18	75	125	
120.12.16.M08.040	16	M8	8,5	13	16	40	88	
120.12.20.M08.025	20	M8	8,5	13	18	25	75	
120.12.20.M08.050	20	M8	8,5	13	18	50	100	
120.12.20.M08.075	20	M8	8,5	13	18	75	125	
120.12.20.M10.025	20	M10	10,5	18	18	25	75	
120.12.20.M10.025.1	20	M10	10,5	18	20	25	80	
120.12.20.M10.050	20	M10	10,5	18	18	50	100	
120.12.20.M10.075	20	M10	10,5	18	18	75	125	
120.12.20.M10.097	20	M10	10,5	18	20	97	152	
120.12.25.M12.025	25	M12	12,5	21	25	25	81	
120.12.25.M12.040	25	M12	12,5	21	25	40	101	
120.12.25.M12.075	25	M12	12,5	21	25	75	131	
120.12.25.M12.109	25	M12	12,5	21	25	109	170	
120.12.25.M12.125	25	M12	12,5	21	25	125	181	
120.12.32.M12.105	32	M12	12,5	21	25	105	170	
120.12.32.M16.025	32	M16	17	29	32	25	85	
120.12.32.M16.040	32	M16	17	29	32	40	105	
120.12.32.M16.075	32	M16	17	29	32	75	135	
120.12.32.M16.125	32	M16	17	29	32	125	185	



Empfohlene Anzugsmomente
Recommended tightening torques
Torques de serrage recommandés
Önerilen sıkma torku

M6	10 Nm
M8	25 Nm
M10	40 Nm
M12	60 Nm
M16	80 Nm



Fräsdorne für Einschraubfräser Zylinderschäfte

Milling Cutter Arbors for Screw-on type Milling Cutters

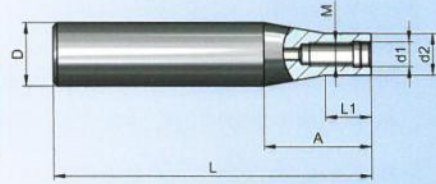
Axes Coupeur Fraisage Pour Vis-Sur Type Coupeurs de Fraisage

Vidalı tip frezeler için Silindirik Şaftlı Takım Tutucular

Bestell-Nr. Order Nr. Référence Sipariş Nr.	D	M	d1	d2	L1	A	L	Euro
123.12.20.M10.067	20	M10	10,5	18	67	68,7	160	
123.12.25.M12.077	25	M12	12,5	21	77	87,5	240	
123.12.32.M12.023	32	M12	12,5	21	23	54	160	
123.12.32.M12.059	32	M12	12,5	21	59,5	134	300	
123.12.32.M16.066	32	M16	17	29	66	68,7	160	
123.12.32.M16.146	32	M16	17	29	146	148,7	300	

Empfohlene Anzugsmomente
Recommended tightening torques
Torques de serrage recommandés
Önerilen sıkma torku

M6	10 Nm
M8	25 Nm
M10	40 Nm
M12	60 Nm
M16	80 Nm



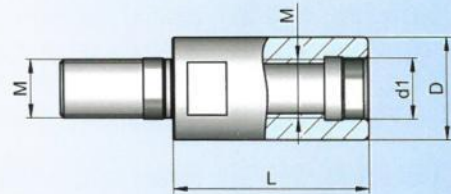
Verlängerungen für Einschraubfräser

Extensions for milling cutter arbors

Extension pour - sur - type coupeurs de fraisage

Vidalı tip frezeler için ara adaptör

Bestell-Nr. Order Nr. Référence Sipariş Nr.	D	M	d1	L	Euro
124.12.13.M08.030	13	M8	8,5	30	
124.12.18.M10.035	18	M10	10,5	35	
124.12.21.M12.040	21	M12	12,5	40	
124.12.29.M16.040	29	M16	17	40	





Reduzierungen für Einschraubfräser

Reducing for milling cutter arbors

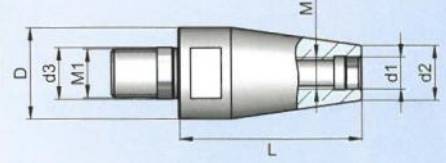
Extension pour vis - sur - type coupeurs de fraisage

Vidalı tip frezeler için ara adaptör

Bestell-Nr. Order Nr. Référence Sipariş Nr.	D	M x M1	d1	d2	d3	L	Euro
126.12.13.M0608.030	13	M6/M8	5,5	10	8,5	30	
126.12.18.M0810.030	18	M8/M10	8,5	13	10,5	30	
126.12.21.M1012.035	21	M10/M12	10,5	18	12,5	35	
126.12.29.M1016.060	29	M10/M16	10,5	18	17	60	
126.12.29.M1216.060	29	M12/M16	12,5	21	17	60	

Empfohlene Anzugsmomente
Recommended tightening torques
Torques de serrage recommandés
Önerilen sıkma torku

M6	10 Nm
M8	25 Nm
M10	40 Nm
M12	60 Nm
M16	80 Nm



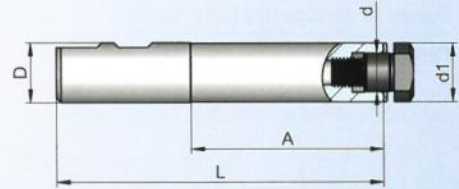
Sägeblattaufnahme

Saw blade holder

Porte - lame de scie

Daire testere tutucu

Bestell-Nr. Order Nr. Référence Sipariş Nr.	Sägeblatt Ø	D	d1	d	A	L	Euro
121.20.05.040	20	20	10	5	40	90	
121.20.08.055	25/32	20	13	8	55	105	
121.20.10.060	40	20	20	10	60	110	
121.25.13.080	50	25	25	13	80	135	
121.25.16.080	63	25	25	16	80	135	



Lieferumfang : Inkl. Spannschraube und Zwischenring
Included : Clamping screw and washer
Inclus : Vis de serrage et bague intermédiaire
Teslim Şekli : Sıkma civatası ve pulu ile birlikte

Verwendung : Zur Aufnahme von Sägeblättern in Fräseraufnahmen oder Spannfüter
Application : For saw blade holders in end mill holder and collet chuck
Emploi : Pour la réception de lames de scie dans des porte-fraises ou des porte-pinces
Kullanma Yeri : Veldon tutuculara ve pens başlığına bağlamak için daire testere malafası



HSK



STEEP TAPER



STRAIGHT SHANK



SPECIAL TOOLHOLDERS



RIGHT ANGLE HEADS



FIXED ANGLE HEADS



UNIVERSAL ANGLE HEADS



SPEED INCREASERS



STANDARD HYDRAULIC



SPECIAL HYDRAULIC



HEAT SHRINK



OTHER TOOLHOLDERS



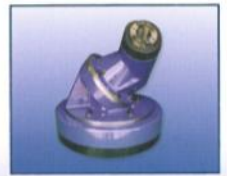
VERTICAL BORING HEADS



SPECIAL DRIVEN TOOLS



SPECIAL & EXTENDED



UNIVERSAL ANGLE HEADS



VDI STATIC TOOLING



VDI DRIVEN TOOLING



EASY CHANGE



COLLETS



TURN - MILL TOOLING



TURN - MILL TOOLING



VERTICAL TURNING - SPECIAL



VERTICAL TURNING -

COVENTRY
ENGINEERING SERVICES

Equipped to offer "turnkey" manufacturing solutions with 2D & 3D design and a full range of specialised precision machining services.

