



Coventry

E N G I N E E R I N G

WHO ARE WE

Coventry Engineering Ltd based in the West Midlands, is a UK based manufacturer of precision static and driven spindle tooling, and subcontracted customer engineered parts which are used in the world's most demanding and high profile industries.



AEROSPACE



DEFENCE



MACHINE TOOLS



MOTORSPORT



MEDICAL



OIL & GAS



PRODUCT RANGE

Over 20 years experience in the design and manufacture of both standard and special tool holding and work holding solutions.

- Custom Solutions
- Standard Products



STANDARD TOOLING PRODUCTS

STATIC TOOLING FOR MACHINE TOOLS

- HSK, BT, DIN (SK), EPS, CAT, ISO, VDI, Collet, Hydraulic, Heat Shrink, Milling Chuck, Rotary Coolant.
- Manual Machines
- Easy Change, ISO
- Accessories



STANDARD TOOLING PRODUCTS

DRIVEN TOOLING FOR MACHINE TOOLS

- Angle heads.
- Driven tooling.
- Hydraulic / precision chucks.



CUSTOM PRODUCT RANGE



Special Toolholders and
complete Tooling Packages
available

Wide range of HSK-T and
Polygon Taper Tooling



LARGE V.T.L. TOOLING

SPECIAL AND CUSTOM APPLICATIONS

- 50 ISO Turning and Boring
 - Standard and custom designed range available
- Modular Adapters
 - Reduces Set up times
 - Enables quick change over
 - Available for a range of modular systems



CUSTOM PRODUCT RANGE

SOLUTIONS FOR MULTI-FUNCTION MACHINES

- 40 Taper for Mazak Integrex 400 series
- 50 Taper for Mazak 'E' series
- HSK 'T' range
- EPS (Capto)



ABOUT US

We have the technical expertise and machinery to manufacture most 'made to print' specialist parts or bespoke assemblies.

Our comprehensive range of CNC machines gives us the capability to handle most manufacturing processes, from simple turning to complex 5-axis milling & grinding in all materials.



QUALITY

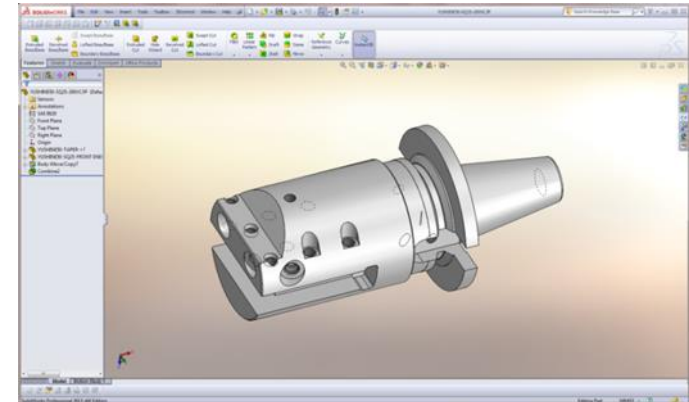
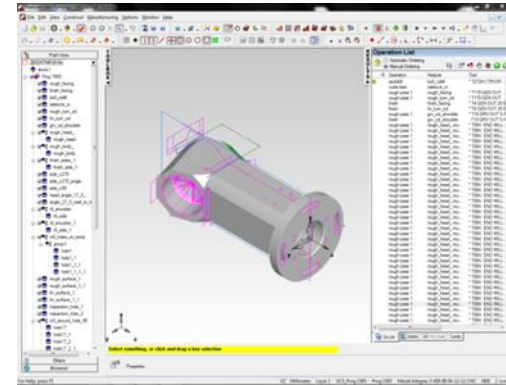
Coventry engineering has a robust Quality Management System (QMS)

- ISO 9001/2015 & AS9100 (rev D) EN9100 accredited.
- Comprehensive range of regularly calibrated UKAS traceable gauges.
- Aberlink "Zenith Too" CMM, 1.5m x 0.8m table.
- Javelin MRP management system incorporates real time data collection and part traceability.



ENGINEERING

- Fully Integrated ERP system using Planit Systems Javelin to co-ordinate
 - Sales order entry
 - Issue of Manufacturing Information
 - Shop floor planning
 - Build and Despatch.
- Full 3D design capability using SOLIDWORKS.
- CAM programming. Data transfer from Solid Works to Delcam to CNC Machines.



CAPABILITIES – Grinding

- **CNC Cylindrical Grinding**
 - Jones and Shipman Ultragrind 1000 – 1000mm bed – 350mm diameter, twin wheel indexing head.
 - Studer favorit CNC – 1000mm bed – 350mm diameter, work pieces up to 120kg.
- **Manual Cylindrical Grinding**
 - Bed length up to 2500mm – 350mm Diameter
- **CNC Internal Grinding**
 - Tripet 4 spindle internal grinding machine
- **Hard Metal Turning**
 - Two CTX500 CNC lathes adapted for hard metal turning, max turn Ø250mm with 1m between centers.

CAPABILITIES – Machining

- Mazak Integrex 400-3 – 300mm chuck, Bar Feed, Tail Stock and Travelling Steady, Max turn $\text{\O} 530\text{mm}$, bed length 1.5m
- Mazak Integrex 300-3 - 250mm chuck + Sub Spindle, bar feed, part catcher. Max turn $\text{\O} 600\text{mm}$, bed length 1.5m
- Mazak Nexus 200 lathe 200mm Kitagawa chuck, programmable tailstock. Max turning $\text{\O} 300\text{mm}$, max turning length 600mm.
- Mazak Quick Turn Smart 300 - automatic bar feed unit. Renishaw Probing with full overload detection option, part catcher. Max turn $\text{\O} 600\text{mm}$, bed length 1.5m
- Hurco VMC30T – 24 station ATC, table size 1000mm x 660mm.
- Hurco VMX60I – 24 station ATC, table size 1500mm x 660mm.
(both with 2 axis rotary indexing unit, 5 axis capability and Renishaw probing.)

Additional Capabilities - Jig boring, manual milling and turning.

FACILITIES

- 17000 sq ft modern, well equipped modern machine shop.
- Full CNC Turning, Milling & Grinding capabilities.
- £1m investment in Mill Turn, 5-axis machining and CNC grinding.
- SolidWorks CAD suite.
- Delcam CAM software.
- Highly skilled and flexible workforce.
- Apprenticeship scheme in place to home grow our workforce.

Thank you Questions??

PROPRIETARY INFORMATION

This Document discloses information and data in which **COVENTRY ENGINEERING LTD** has proprietary rights. Neither receipt nor possession thereof confers rights to reproduce, use or disclose in fully or in part except by written permission of **COVENTRY ENGINEERING**.

ALL DATA INCLUDED IN THIS PRESENTATION IS PROPRIETARY